

7 FIFTH



MADISON
CAPITAL

71

NEW MODERN FULLY BUILT SPACE, IMMEDIATE MOVE IN

- LAST REMAINING AVAILABILITY: 15,231 RSF FULL FLOOR
- LIGHT-FILLED SPACE WITH OVERSIZED WINDOWS
- FLATIRON DISTRICT/STEPS FROM UNION SQUARE

[VIDEO TOUR](#)

FULL BUILDING RENOVATION

MULTI-MILLION DOLLAR CAPITAL IMPROVEMENT PLAN COMPLETE

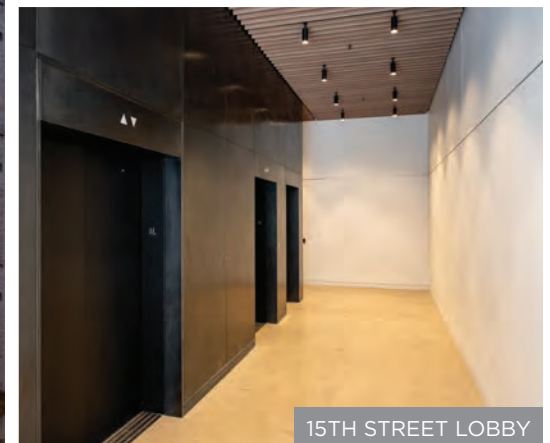
RENOVATIONS INCLUDE:

- PROMINENT NEW BUILDING ENTRANCES AND ELEGANTLY REMODELED LOBBIES
- STATE-OF-THE-ART MODERNIZATION OF FIVE BUILDING ELEVATORS, FACADE ENHANCEMENTS
- BRAND-NEW DEDICATED HVAC UNITS FOR EACH FLOOR

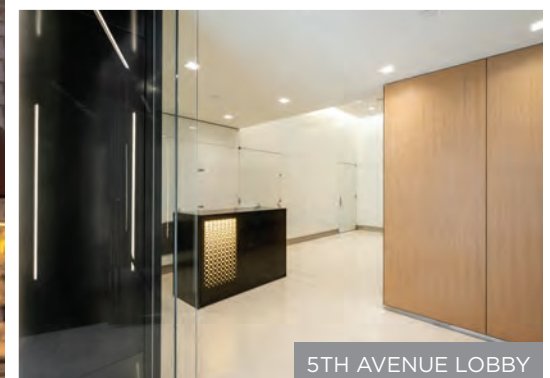
STRONG, WELL-CAPITALIZED OWNERSHIP AND HIGH-END TENANT ROSTER THROUGHOUT THE BUILDING INCLUDING ADYEN, FORRESTER RESEARCH, AND NEW SCHOOL



5TH AVENUE ENTRANCE

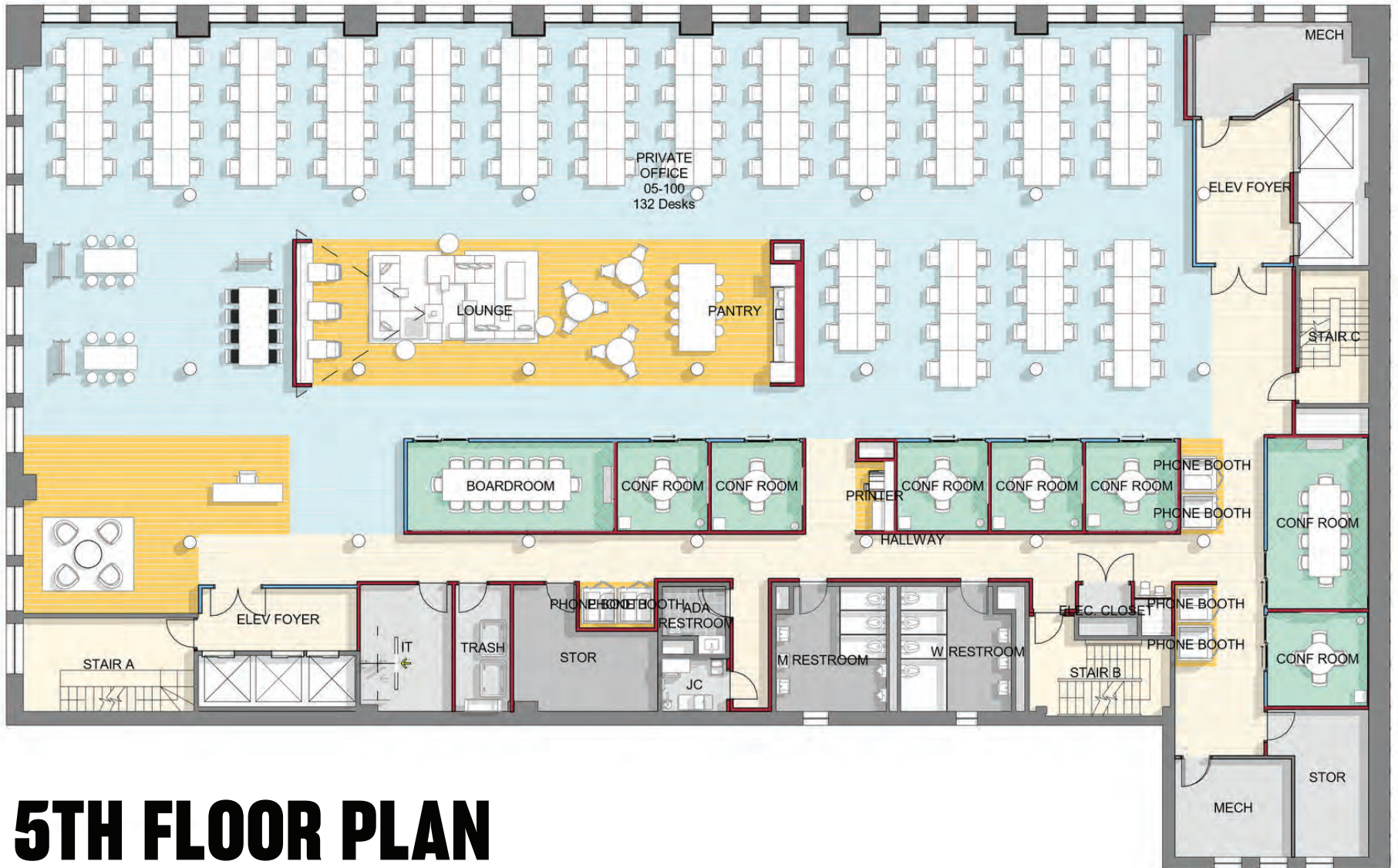


15TH STREET LOBBY



5TH AVENUE LOBBY





5TH FLOOR PLAN

- 15,231 RSF



IN THE HEART OF THE CITY

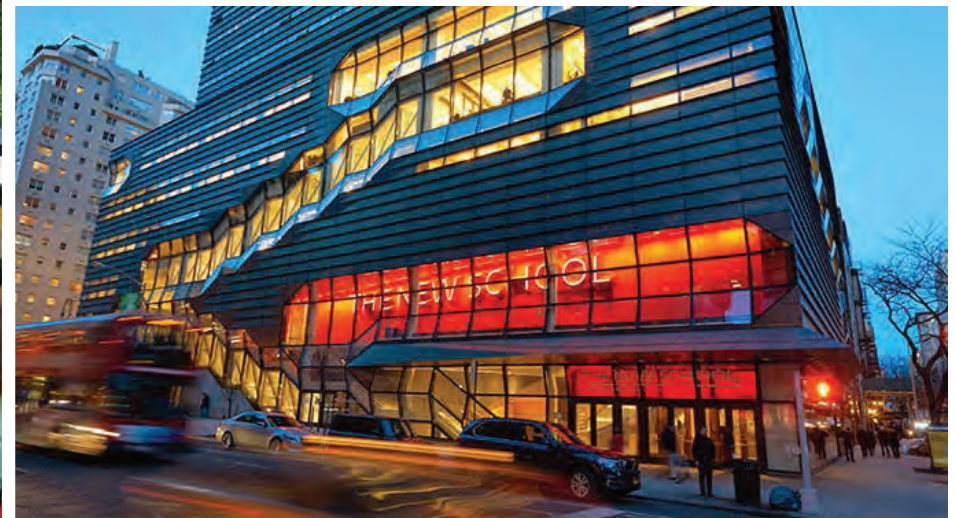
UNBEATABLE FLATIRON LOCATION
STEPS FROM UNION SQUARE

CENTRAL, TRANSIT ORIENTED LOCATION THAT IS SITUATED WITHIN 0.1 MILES OF THE 4, 5, 6, L, N, Q, R AND W





AT THE CROSS OF FLATIRON AND UNION SQUARE





7 | FIFTH

LEASING CONTACTS



MADISON
CAPITAL

Mitchell Konsker
Vice Chairman
(212) 812-5766
Mitchell.Konsker@am.jll.com

Daniel Turkewitz
Executive Managing Director
(212) 418-2689
Dan.Turkewitz@am.jll.com

Benjamin Bass
Executive Managing Director
(212) 812-6026
Benjamin.Bass@am.jll.com

Kyle C. Young
Vice President
(212) 812-6544
Kyle.Young@jll.com

