



the RETAIL

AT RIVER EAST

10,919 SF AVAILABLE IN STREETERVILLE

STREETERVILLE OVERVIEW

As one of Chicago’s most dynamic and upscale urban areas, Streeterville is synonymous with all that makes Chicago great. A true live/work/play community, Streeterville is home to some of the most prestigious hotels in the city, 4.5 million square feet of high-density upscale retail, restaurants that are among the town’s finest, and the most exclusive residential addresses in Chicago.

Streeterville is a flourishing, rapidly growing community with tree-lined streets, abundant recreational venues, and a beautiful lakefront setting. The Streeterville neighborhood is generally known as the area between the Chicago River to the south, Oak Street Beach to the north, Lake Michigan to the east, and Michigan Avenue’s “Magnificent Mile” to the west.

The neighborhood is home to many of Chicago’s most celebrated attractions such as the famous John Hancock Tower, the entertaining Navy Pier, and the historic Old Water Tower, which is the only public building to have survived the Chicago Fire of 1871. Streeterville’s something-for-everyone attractions, luxurious amenities, family-oriented environment, “walk-to-work” proximity to Chicago’s CBD and booming River North tech sector, has made it a magnet for real estate development and population growth over the last decade.



113,658

Total Population



356,778

Daytime Population



\$154,956

Avg. Household Income



73,212

Total Households

All numbers taken from ESRI within one mile

STREETERVILLE'S NOTABLE NEW DEVELOPMENTS



11,842
Total Multifamily units
in 26 properties

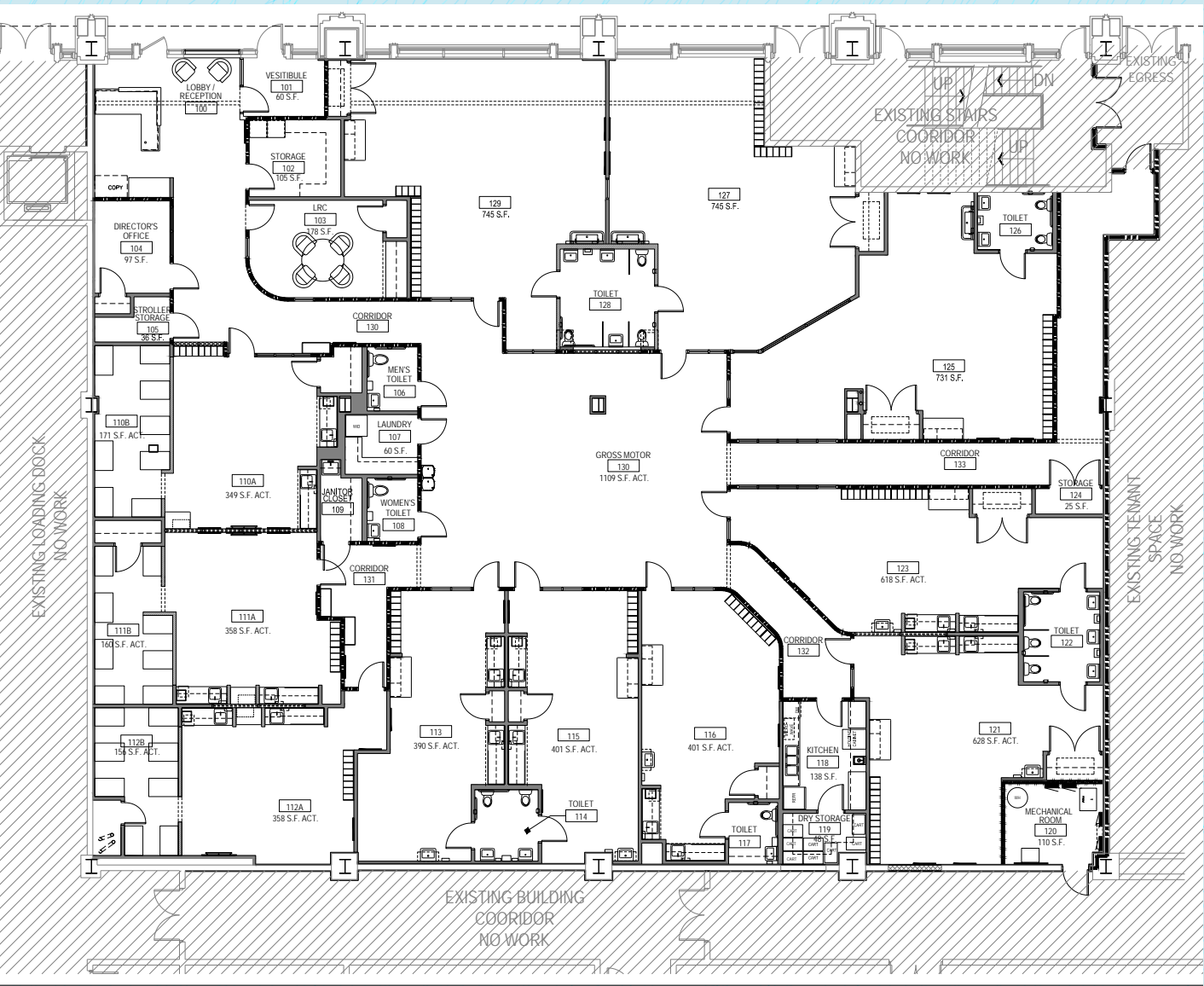


10,755
Hotel rooms in
these boundaries

STACKING PLAN



SPACE LOD – 10,919 SF



DIVERSE AND EXPANDING DEMAND DRIVERS



Click or tap icon to show on map

SIGNIFICANT DEMAND DRIVERS

- MEDICAL:** The Northwestern Memorial Medical Campus occupies a 25-acre area comprising roughly seven city blocks in Streeterville.
- RESIDENTIAL:** Streeterville provides a dense residential presence around the site. There are 34,800 residents in a 0.5 mile radius.
- HOTELS:** Over 18,000 luxury hotel rooms in a 0.5 mile radius.
- RETAIL/TOURISM:** Bounded to the East and to the West by two of Chicago's most popular tourist attractions, The Magnificent Mile and Navy Pier.
- EDUCATION:** Home to several premier educational establishments including University of Chicago, Northwestern, and Loyola University of Chicago.



For more information contact:

Peter Caruso
peter.caruso@jll.com
+1 312 228 2926

Steve Schwartz
steve.schwartz@jll.com
+1 312 228 2157

