

# EXCLUSIVE LISTING 12 CROSBY STREET



# 12 CROSBY STREET

BEAUTIFUL STORE ON SOHO'S MOST ICONIC BLOCK WITH RICK OWENS, MAISON MARGIELA, AND BDDW

**LOCATION** Between Grand & Howard Streets

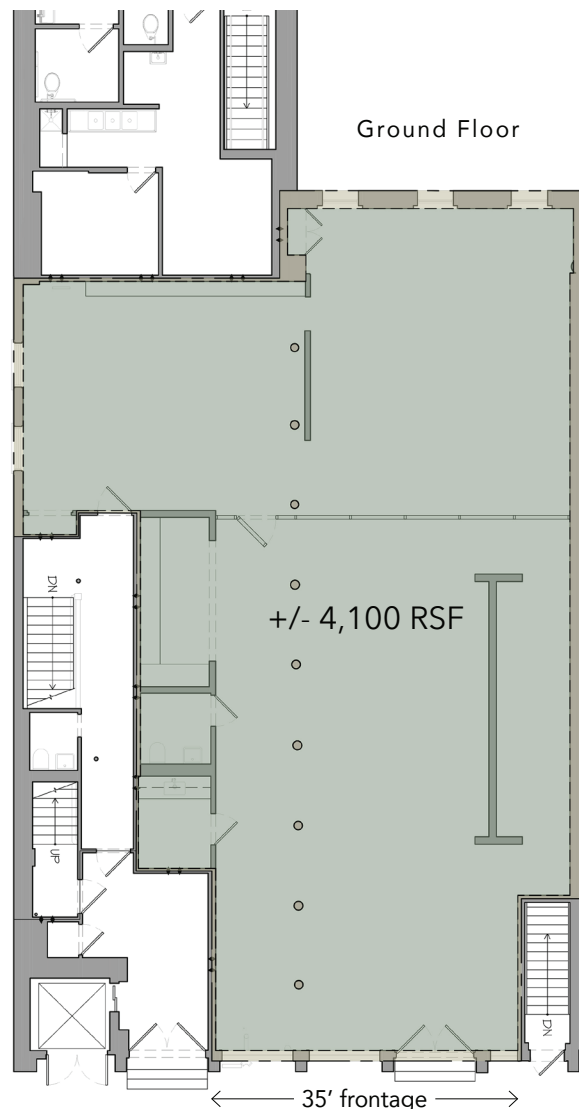
**AREA (approx.)** Ground Floor +/- 4,100 RSF  
Basement +/- 2,000 RSF

**FRONTAGE** 35'

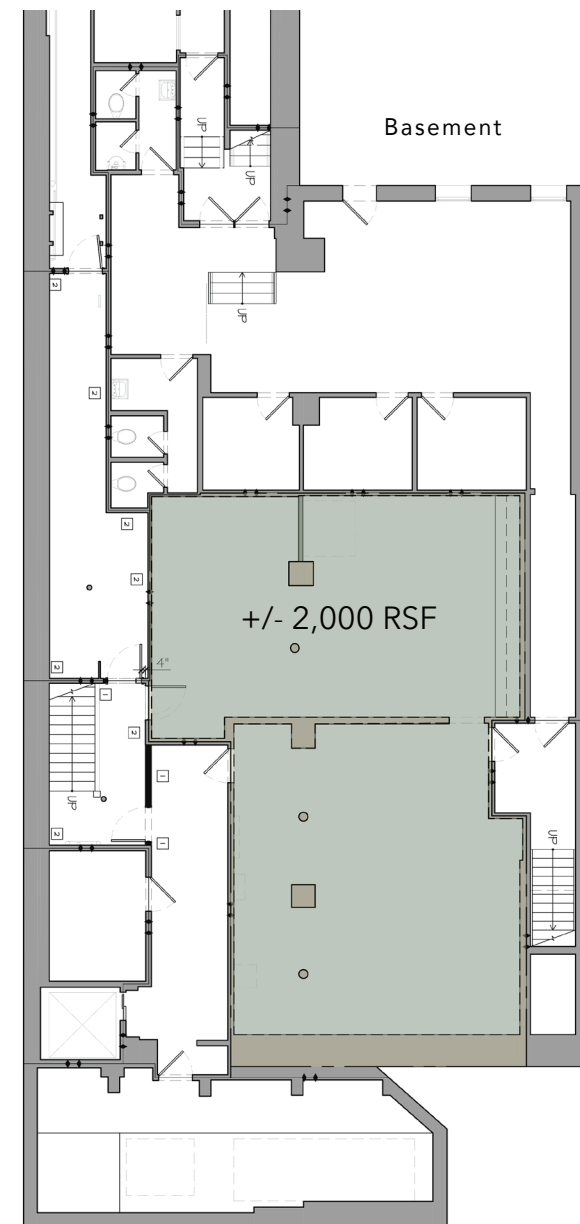
**CEILING HEIGHTS** Ground Floor 12' finished  
Basement 11'

**POSSESSION** September 1, 2025; possibly sooner

- COMMENTS**
- Institutionally owned and managed
  - Modernized building systems
  - Office/Storage/Workshop Basement
  - Less than a 10-minute walk from 15 different subway lines

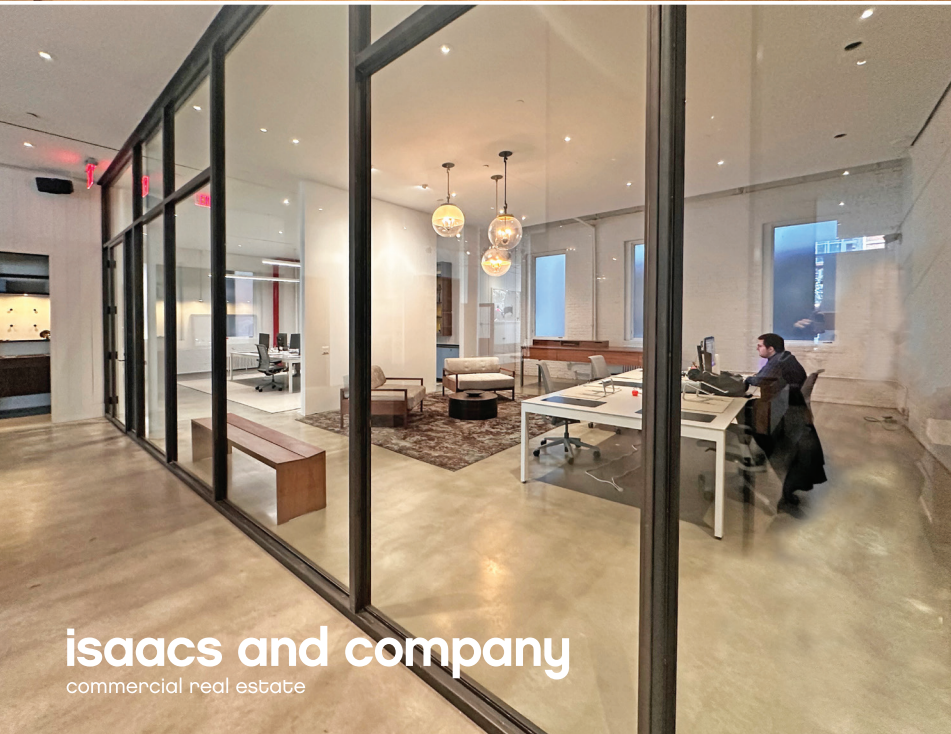


Crosby Street



# 12 CROSBY STREET

Ground Floor



# 12 CROSBY STREET



# 12 CROSBY STREET

FOR MORE INFORMATION CONTACT  
EXCLUSIVE LEASING AGENTS:

**Joel Isaacs**  
646 710 3890  
joel@isaacsandcompany.com

**Nick Cowan**  
646 710 3897  
nick@isaacsandcompany.com

**Treena Lombardo**  
646 710 3892  
treena@isaacsandcompany.com

**isaacs and company**  
commercial real estate



**REBNY** Although the information regarding property sale, rental or financing is from sources deemed reliable, such information has not been verified and no express representation is made nor is any to be implied as to the accuracy hereof, and it is submitted subject to errors, omissions, change of price, rental or other conditions, prior sale, lease or financing or withdrawal without notice.

**Streets:** Spring St, Broome St, Grand St, Howard St, Crosby St

**Businesses:** CLUB MONACO, MoMA Design Store, J.CREW, lululemon, BALTHAZAR RESTAURANT, Orangetheory FITNESS, bloomingdales, BROKEN ENGLISH, J.CREW MEN, HARNEY & SONS, TWO PALMS, THE CITIZENRY, NAKED & FAMOUS DENIM, Le Botaniste, PARACHUTE, raisonné, 12 CROSBY, FUEGUIA, SPOKE & WEAL, GARRETT LEIGHT CALIFORNIA OPTICAL, JACQUES, NOMO, B D D W, Maison Margiela PARIS, THE SMILE, M. CROW, TWP, TI HOWARD, Le Cou Cou

**Transit:** R W, B D F M 6, C E, J Z, A C E 1, N Q R W J Z 6

**Other:** STARBUCKS COFFEE, patagonia, The Frankie Shop, MZ WALLACE, Champs, INDOCHINO, E ATALY, JACK'S WIFE FREDA, Glossier, Officine Générale Paris 6<sup>e</sup>, paloma — wool, Ceremonia, BONOBOS, Miansai, Fellow Barber, SATURDAYS SURF NYC

**Logos:** JOE & THE JUICE, STARBUCKS COFFEE, patagonia, The Frankie Shop, MZ WALLACE, Champs, INDOCHINO, E ATALY, JACK'S WIFE FREDA, Glossier, Officine Générale Paris 6<sup>e</sup>, paloma — wool, Ceremonia, BONOBOS, Miansai, Fellow Barber, SATURDAYS SURF NYC, FUEGUIA, SPOKE & WEAL, GARRETT LEIGHT CALIFORNIA OPTICAL, JACQUES, NOMO, B D D W, Maison Margiela PARIS, THE SMILE, M. CROW, TWP, TI HOWARD, Le Cou Cou

\* Coming Soon