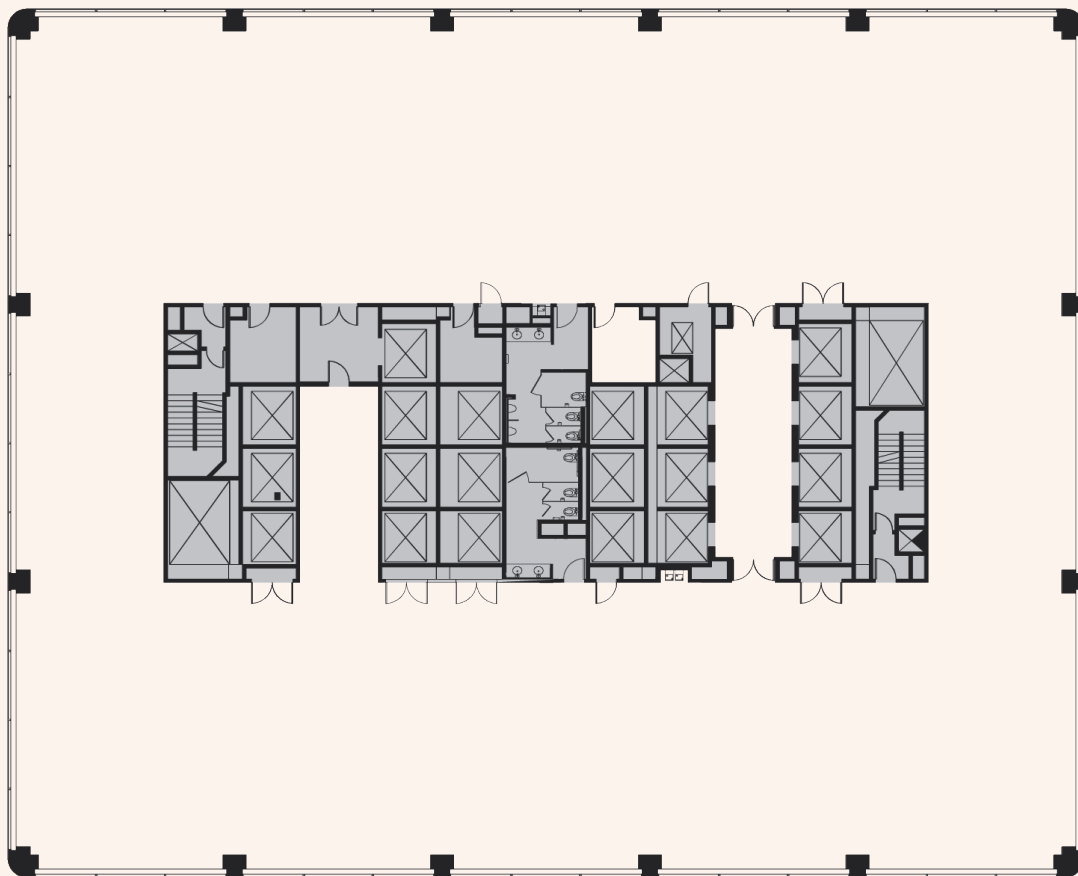


**±19,028 RSF**  
**Low-Rise | Base Plan**



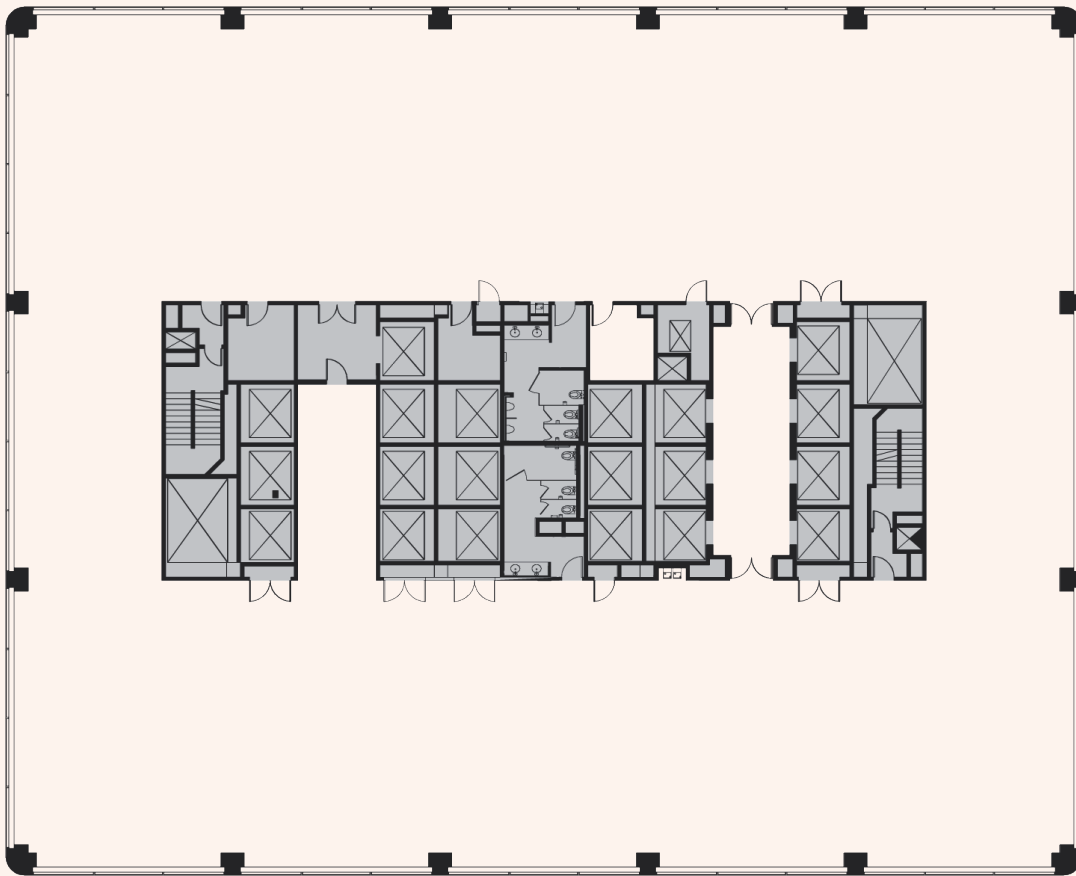
MARK ANDERSON  
Vice Chairman  
+1 415 713 1014  
mark.anderson@cushwake.com  
Lic. #01325399

SAM WASSERSTEIN  
Executive Director  
+1 415 773 3528  
sam.wasserstein@cushwake.com  
Lic. #01798616

BRENDON KANE  
Executive Director  
+1 415 677 0466  
brendon.kane@cushwake.com  
Lic. #01884552



**±19,007 RSF**  
**Low-Rise | Base Plan**



MARK ANDERSON  
Vice Chairman  
+1 415 713 1014  
mark.anderson@cushwake.com  
Lic. #01325399

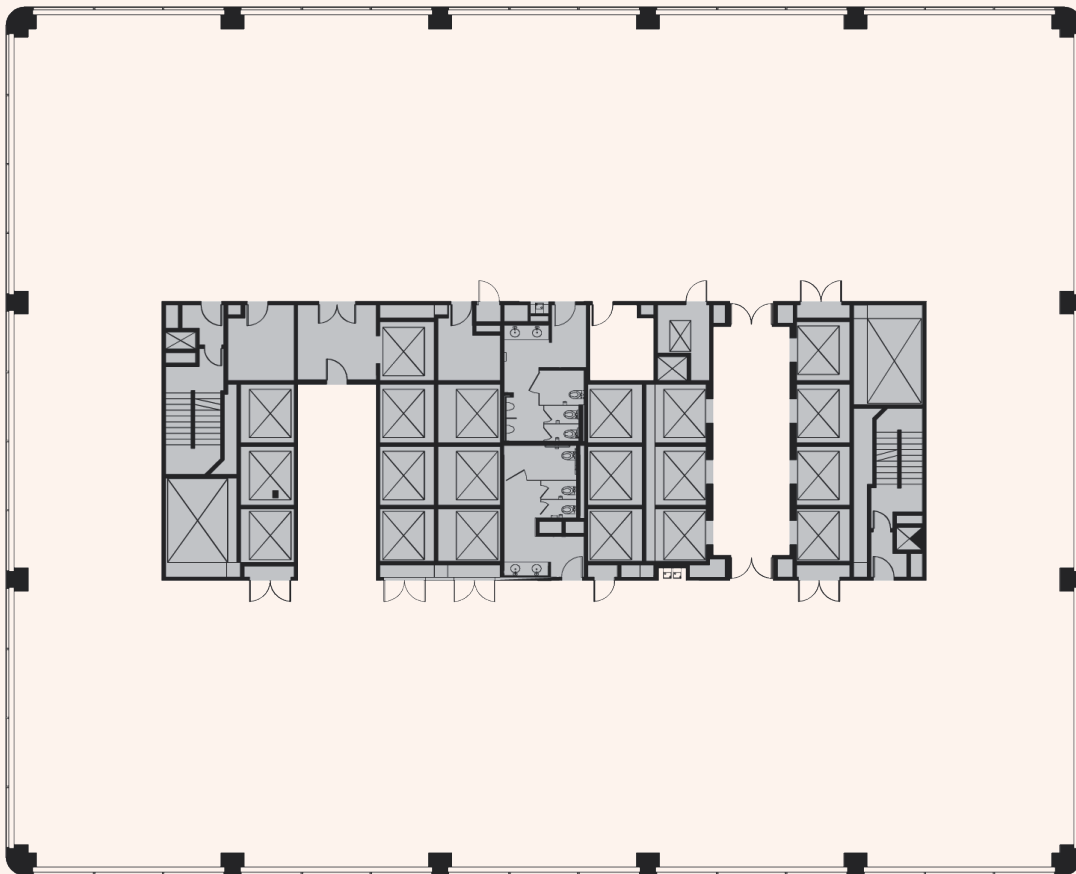
SAM WASSERSTEIN  
Executive Director  
+1 415 773 3528  
sam.wasserstein@cushwake.com  
Lic. #01798616

BRENDON KANE  
Executive Director  
+1 415 677 0466  
brendon.kane@cushwake.com  
Lic. #01884552

 **CUSHMAN &  
WAKEFIELD**

 **MADISON  
CAPITAL**

**±18,987 RSF**  
**Low-Rise | Base Plan**



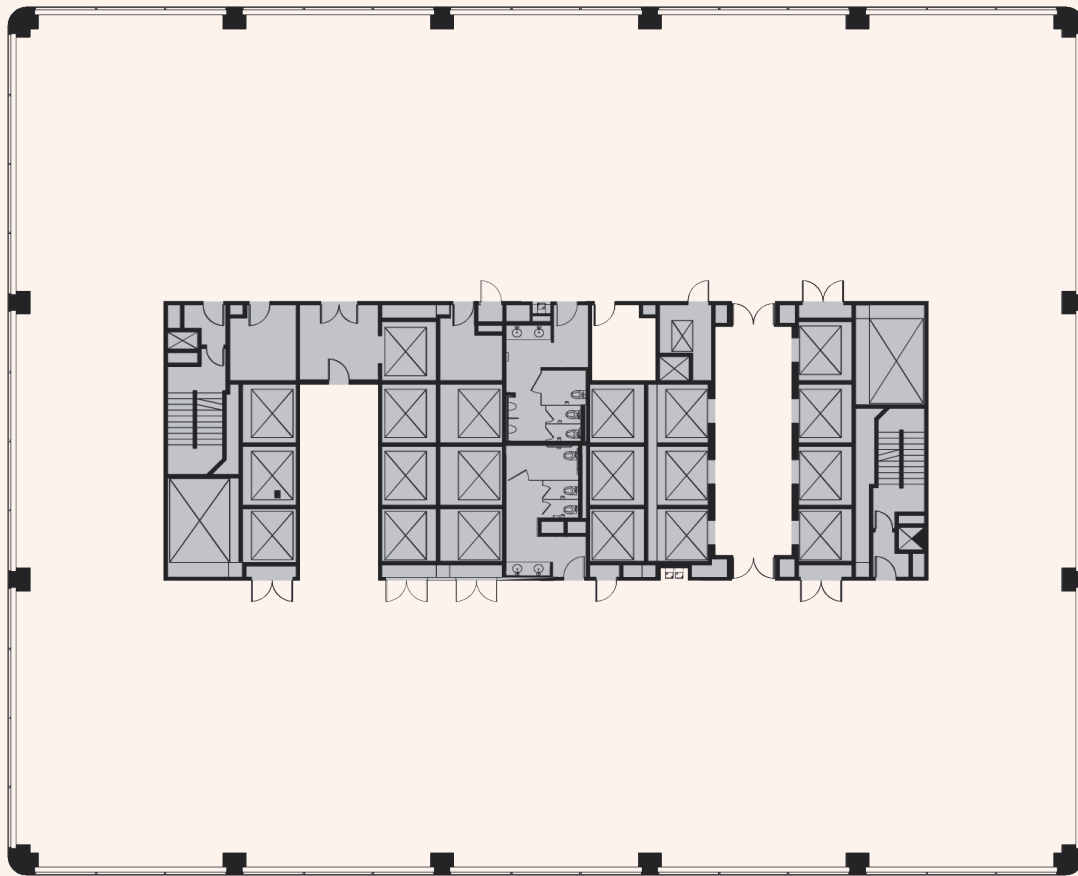
MARK ANDERSON  
Vice Chairman  
+1 415 713 1014  
mark.anderson@cushwake.com  
Lic. #01325399

SAM WASSERSTEIN  
Executive Director  
+1 415 773 3528  
sam.wasserstein@cushwake.com  
Lic. #01798616

BRENDON KANE  
Executive Director  
+1 415 677 0466  
brendon.kane@cushwake.com  
Lic. #01884552



**±18,987 RSF**  
**Low-Rise | Base Plan**



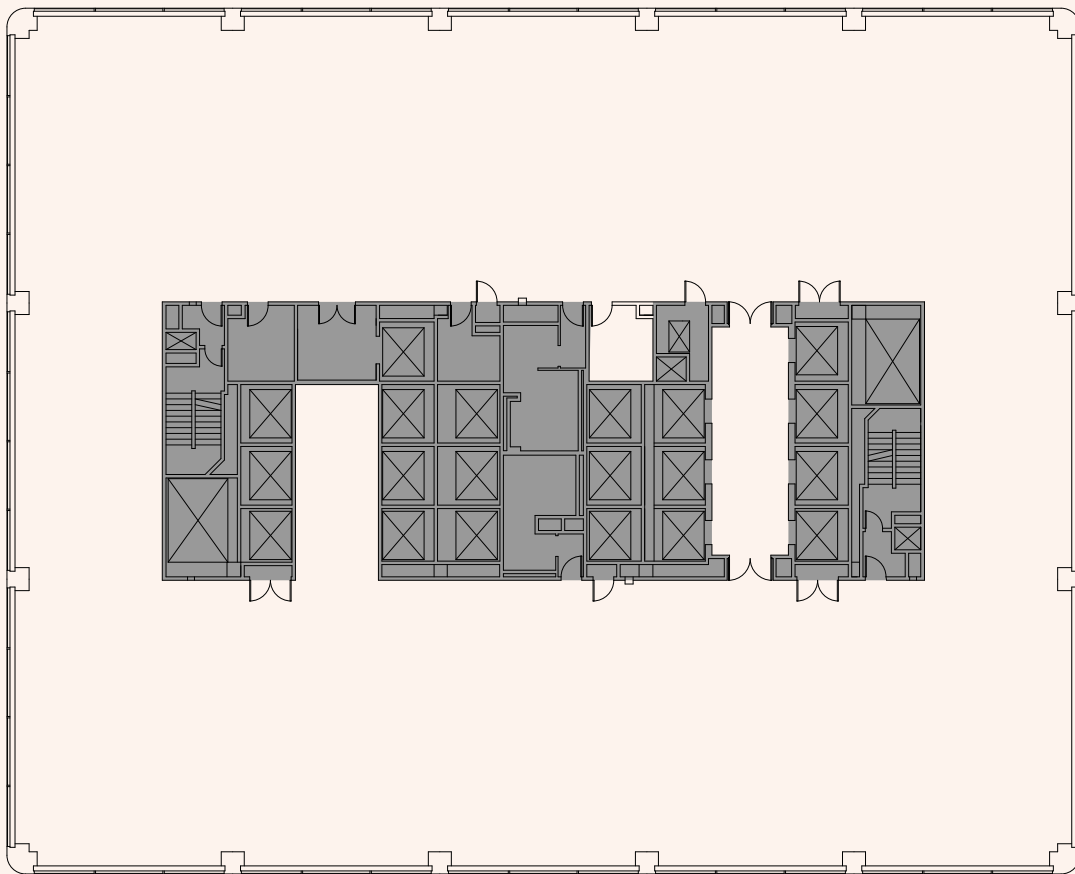
MARK ANDERSON  
Vice Chairman  
+1 415 713 1014  
mark.anderson@cushwake.com  
Lic. #01325399

SAM WASSERSTEIN  
Executive Director  
+1 415 773 3528  
sam.wasserstein@cushwake.com  
Lic. #01798616

BRENDON KANE  
Executive Director  
+1 415 677 0466  
brendon.kane@cushwake.com  
Lic. #01884552



**±19,008 RSF**  
**Low-Rise | As-Built**



MARK ANDERSON  
Vice Chairman  
+1 415 713 1014  
mark.anderson@cushwake.com  
Lic. #01325399

SAM WASSERSTEIN  
Executive Director  
+1 415 773 3528  
sam.wasserstein@cushwake.com  
Lic. #01798616

BRENDON KANE  
Executive Director  
+1 415 677 0466  
brendon.kane@cushwake.com  
Lic. #01884552



**±7,640 RSF**  
**Low-Rise | As Built**



- 5 Private Offices
- 1 Large Conference Room
- 2 Medium Conference Rooms
- 1 Huddle Room
- 24 Workstations
- 1 Break Room
- 1 Reception Area
- 1 Printer / Copy / Mail Area
- 1 Server Room
- 1 Storage Room
- 1 Wellness Room

MARK ANDERSON  
Vice Chairman  
+1 415 713 1014  
mark.anderson@cushwake.com  
Lic. #01325399

SAM WASSERSTEIN  
Executive Director  
+1 415 773 3528  
sam.wasserstein@cushwake.com  
Lic. #01798616

BRENDON KANE  
Executive Director  
+1 415 677 0466  
brendon.kane@cushwake.com  
Lic. #01884552

**±7,347 RSF**  
**Low-Rise | As Built**



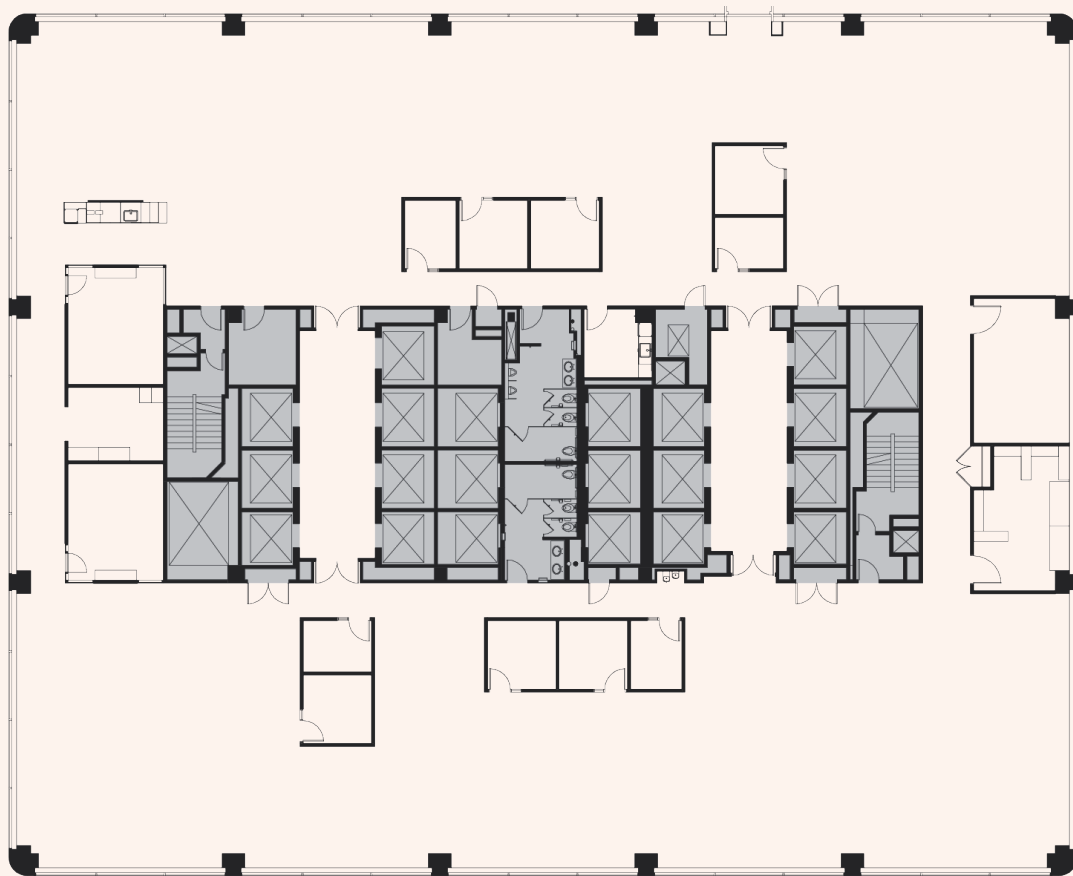
- 13 Private Offices
- 1 Large Conference Room
- 2 Medium Conference Rooms
- 2 Small Meeting Rooms
- 2 Workstations 8x8
- 1 Coffee Station
- 1 Reception Area
- 1 Printer / Copy / Mail Room
- 1 Server Room
- 1 Storage Room

MARK ANDERSON  
Vice Chairman  
+1 415 713 1014  
mark.anderson@cushwake.com  
Lic. #01325399

SAM WASSERSTEIN  
Executive Director  
+1 415 773 3528  
sam.wasserstein@cushwake.com  
Lic. #01798616

BRENDON KANE  
Executive Director  
+1 415 677 0466  
brendon.kane@cushwake.com  
Lic. #01884552

**±18,964 RSF**  
**Mid-Rise | As Built**



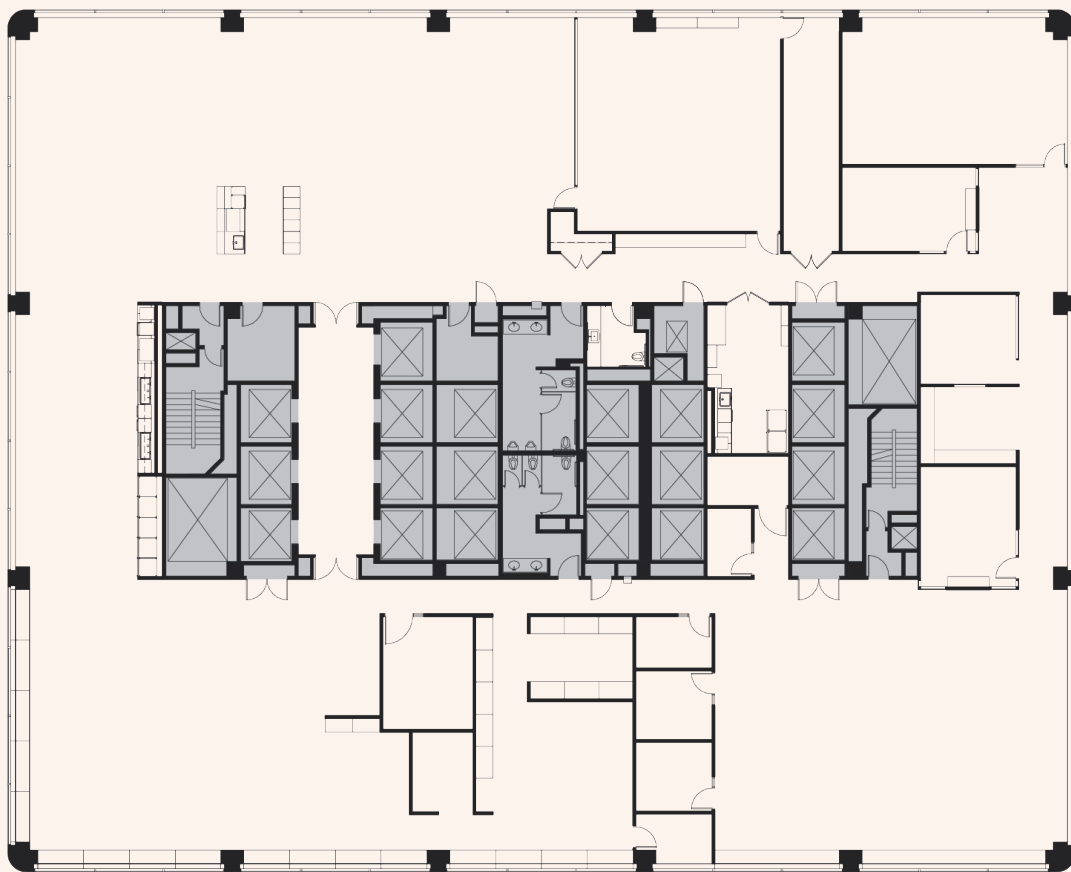
MARK ANDERSON  
Vice Chairman  
+1 415 713 1014  
mark.anderson@cushwake.com  
Lic. #01325399

SAM WASSERSTEIN  
Executive Director  
+1 415 773 3528  
sam.wasserstein@cushwake.com  
Lic. #01798616

BRENDON KANE  
Executive Director  
+1 415 677 0466  
brendon.kane@cushwake.com  
Lic. #01884552



**±18,925 RSF**  
**Mid-Rise | As Built**



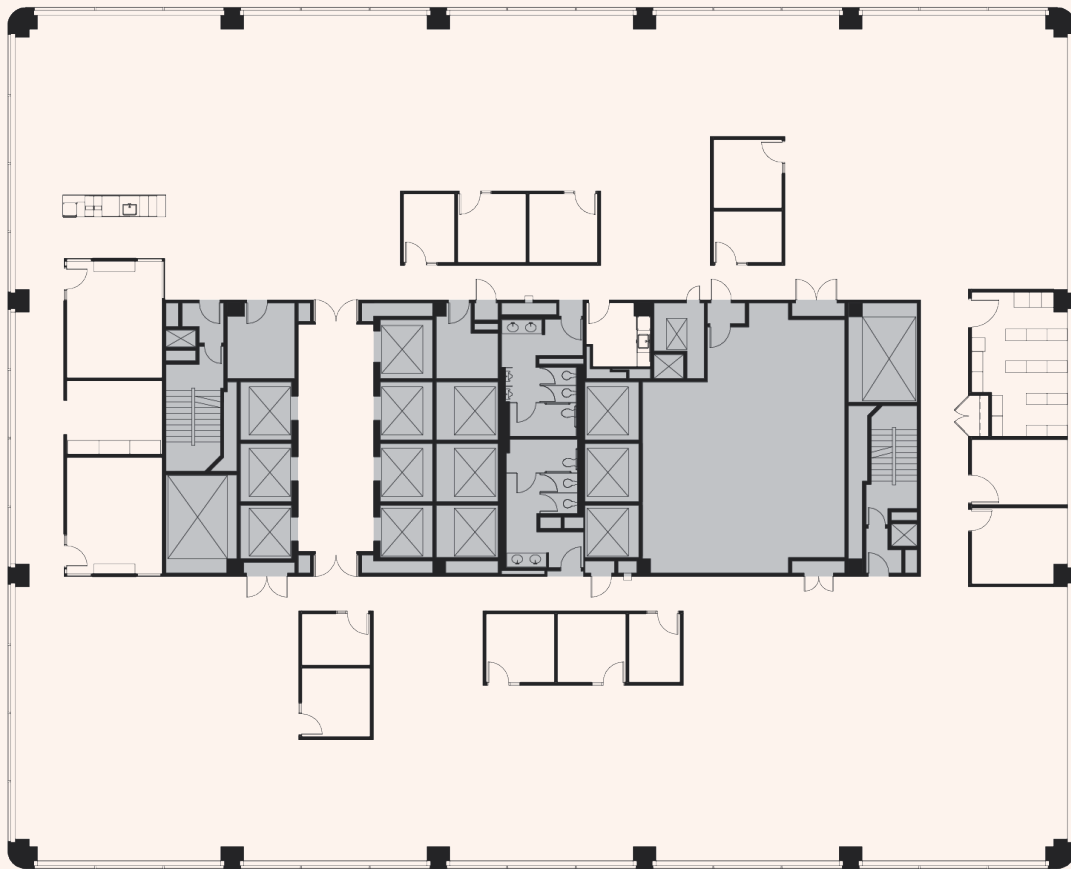
MARK ANDERSON  
Vice Chairman  
+1 415 713 1014  
mark.anderson@cushwake.com  
Lic. #01325399

SAM WASSERSTEIN  
Executive Director  
+1 415 773 3528  
sam.wasserstein@cushwake.com  
Lic. #01798616

BRENDON KANE  
Executive Director  
+1 415 677 0466  
brendon.kane@cushwake.com  
Lic. #01884552



**±18,364 RSF**  
**Mid-Rise | As Built**



MARK ANDERSON  
Vice Chairman  
+1 415 713 1014  
mark.anderson@cushwake.com  
Lic. #01325399

SAM WASSERSTEIN  
Executive Director  
+1 415 773 3528  
sam.wasserstein@cushwake.com  
Lic. #01798616

BRENDON KANE  
Executive Director  
+1 415 677 0466  
brendon.kane@cushwake.com  
Lic. #01884552



**±19,284 RSF**  
**Mid-Rise | As Built**



MARK ANDERSON  
Vice Chairman  
+1 415 713 1014  
mark.anderson@cushwake.com  
Lic. #01325399

SAM WASSERSTEIN  
Executive Director  
+1 415 773 3528  
sam.wasserstein@cushwake.com  
Lic. #01798616

BRENDON KANE  
Executive Director  
+1 415 677 0466  
brendon.kane@cushwake.com  
Lic. #01884552



**±20,130 RSF**  
High-Rise | As Built



■ 2nd generation mostly open layout

■ Excellent views

MARK ANDERSON  
Vice Chairman  
+1 415 713 1014  
mark.anderson@cushwake.com  
Lic. #01325399

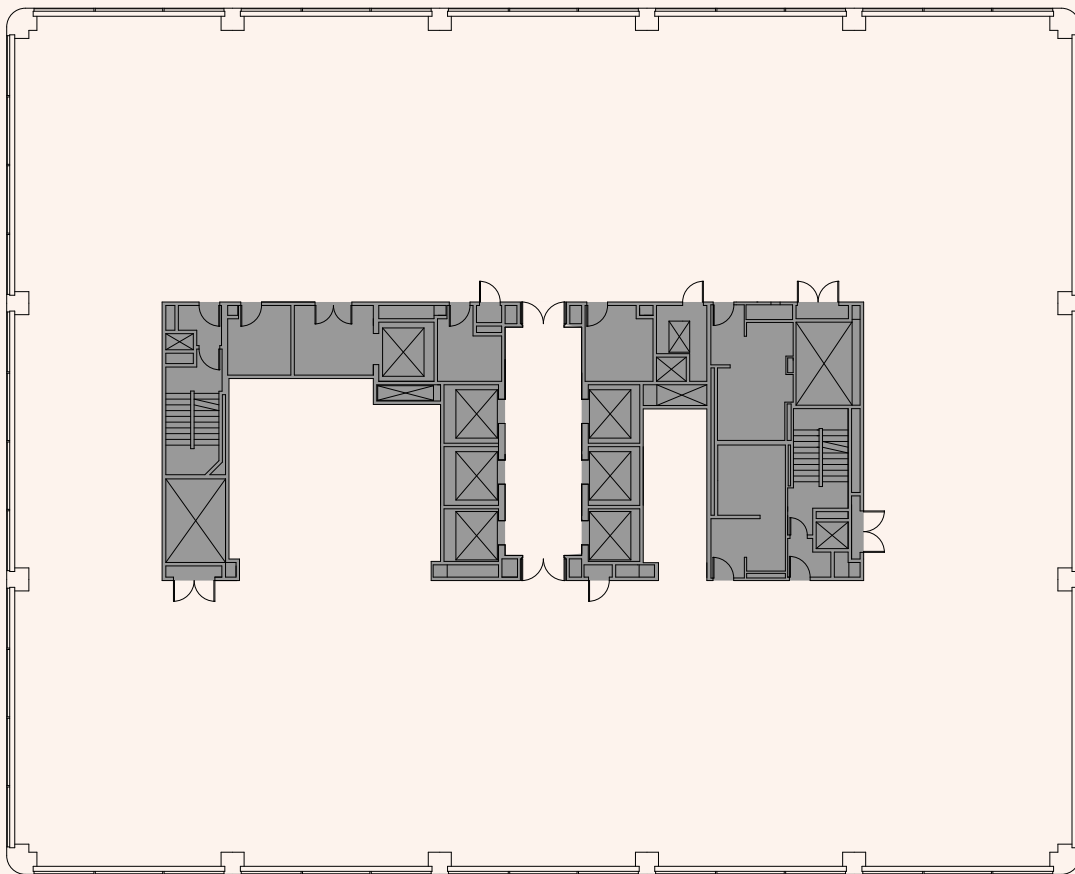
SAM WASSERSTEIN  
Executive Director  
+1 415 773 3528  
sam.wasserstein@cushwake.com  
Lic. #01798616

BRENDON KANE  
Executive Director  
+1 415 677 0466  
brendon.kane@cushwake.com  
Lic. #01884552

 CUSHMAN &  
WAKEFIELD

 MADISON  
CAPITAL

**±20,130 RSF**  
High-Rise | Base Plan



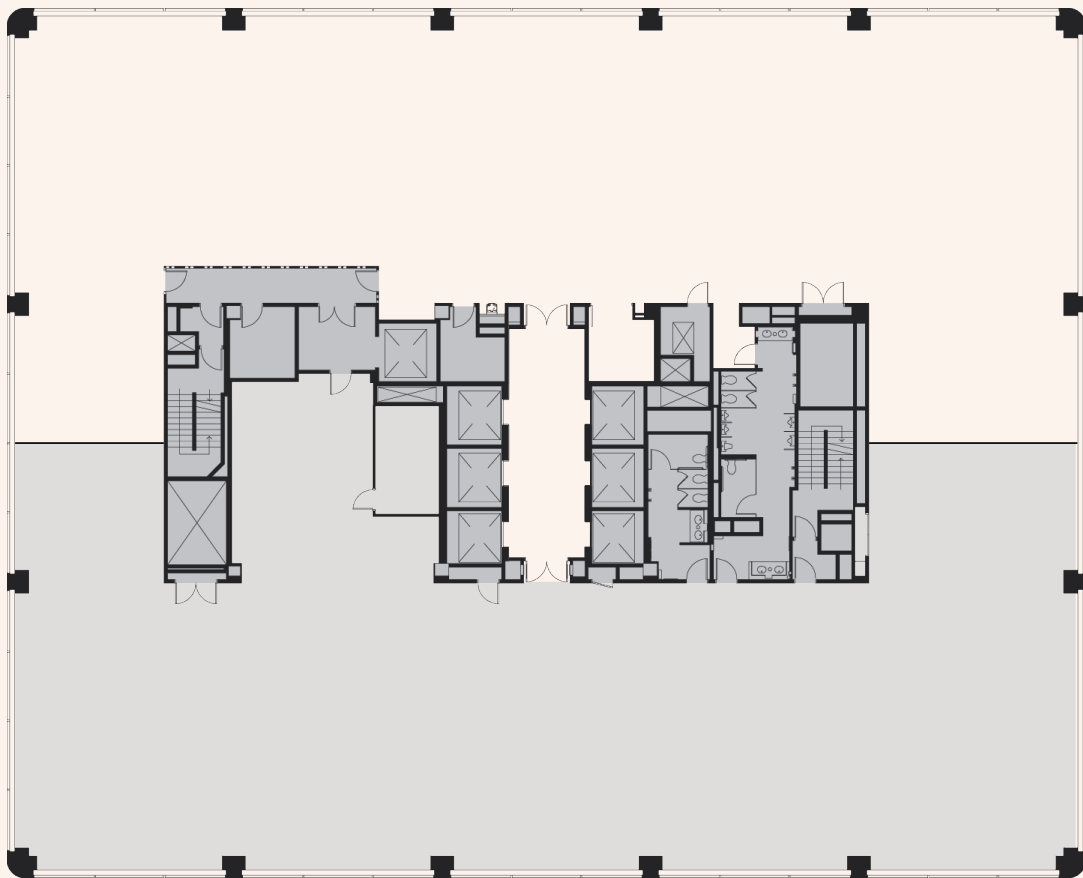
MARK ANDERSON  
Vice Chairman  
+1 415 713 1014  
mark.anderson@cushwake.com  
Lic. #01325399

SAM WASSERSTEIN  
Executive Director  
+1 415 773 3528  
sam.wasserstein@cushwake.com  
Lic. #01798616

BRENDON KANE  
Executive Director  
+1 415 677 0466  
brendon.kane@cushwake.com  
Lic. #01884552



**±9,450 RSF**  
High-Rise | As Built



MARK ANDERSON  
Vice Chairman  
+1 415 713 1014  
mark.anderson@cushwake.com  
Lic. #01325399

SAM WASSERSTEIN  
Executive Director  
+1 415 773 3528  
sam.wasserstein@cushwake.com  
Lic. #01798616

BRENDON KANE  
Executive Director  
+1 415 677 0466  
brendon.kane@cushwake.com  
Lic. #01884552

